

thermally broken

alumin

Flat Rooflight

unique

Opening Rooflight

Balustrade

design

Lantern

Integrated

Frameless

# Rooflight Systems

component laminate

manufactured

in Great Britain

high end components

Aluminium

aesthetically

Glass

pleasing

structural glazing

bespoke glazing

solutions

Design & manufacture



FIRST GLASS ROOFS  
LIGHT INSPIRED DESIGN



Over the years, First Glass Roofs Ltd have become one of the most innovative companies in the field of Rooflights and bespoke glazing solutions.

First Glass Roofs Ltd have a design team that have thought hard about the needs of the sophisticated glazing industry, all our extrusions and components are designed in house using only great British companies such as Hydro and Vertik-al, the first company in the UK to offer powdercoating, and with their 55 year knowledge and development, we offer only the best in quality assured products and components alike. Our products are manufactured in the UK at our east Hampshire headquarters.

First Glass Roofs Ltd are renowned for supplying our systems to some of the largest names in the aluminium glazing industry. We understand that when one of our systems is brought to the market, that testing is a key part of the products features. That's why all of our products are tested by government accredited test facilities, to ensure peace of mind for the end user when it comes to design and functionality, brought together for only the best performing products on the market.

With 2 new products every year being designed and brought to market, we are adapting to the ever-changing needs of design requirements and certification. This makes us a preferred choice for many architects and designers across the UK and over-seas.

## Contents

4	Flat Rooflight	20	Integrated Units
6	Flat Rooflight, Glass Options	21	Manufactured Frame Only
8	Walk On Units	22	Upstand Requirements
10	Opening Rooflights	24	Bespoke Designs
14	Frameless Roof Lantern & Pyramid	25	Up & Over Rooflights
16	Integrated Balustrade	26	FAQ's
18	Frameless Glass Box	28	Contact Details





Our Flat Rooflights are designed to be pitched at 5 degrees minimum as an industry standard to ensure minimal pooling on the Rooflight.

We only use top specification glass in the manufacture of the flat rooflight for product safety and longevity.

Larger Flat Rooflights, if required, can be split into various panes of glass which help with access and weight issues.

All Rooflights under 1500mm in width can be designed with structural glass to glass silicone joins for the ultimate frameless design.

Rooflights with a width above 1500mm will require custom fabricated aluminium beams for extra support. These are usually 50 x 100mm box section beams.

Glass specifications are subject to size, however any units with an inner pane of 8mm or above will always be heat soaked as a standard.



## Frameless Flat Rooflight Lead time 12-14 working days

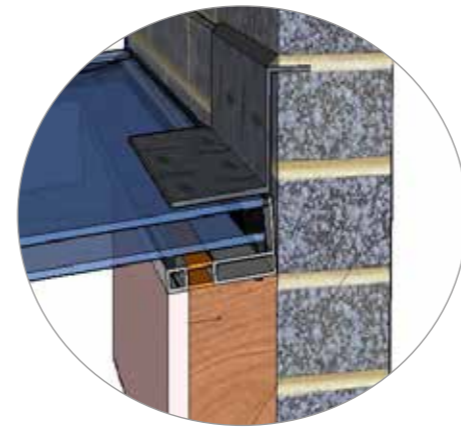
Our Flat Rooflight system was the first system designed by First Glass Roofs, boasting large thermal breaks for unrivalled truly tested U-Values.

Keeping a minimalist aluminium structure is always key to our designs, while also being very versatile in its design construction allowing triple glazed and quadruple glazed yet remain flush with the frame, makes this system one preferred by installers across the UK.

- Thermally Broken Aluminium
- 2 x 27mm Polyamide Inserts
- 48mm overhang for a better weathertight seal
- Glass U Value from 1.0 to 0.2
- Glass Specification is subject to size
- Available in various glazing options

### Standard Colours

 Anthracite Grey RAL 7016m	 Jet Black RAL 9005m	 Anthracite Grey 7016m Ext White 9910m Int
 Jet Black 9005m Ext White 9910m Int	 Bespoke Colour (Additional Charge)	



Due to our bespoke manufacturing, our Flat Rooflight System allows us to work around any Wall abutments, by cutting off the bottom metal lip.

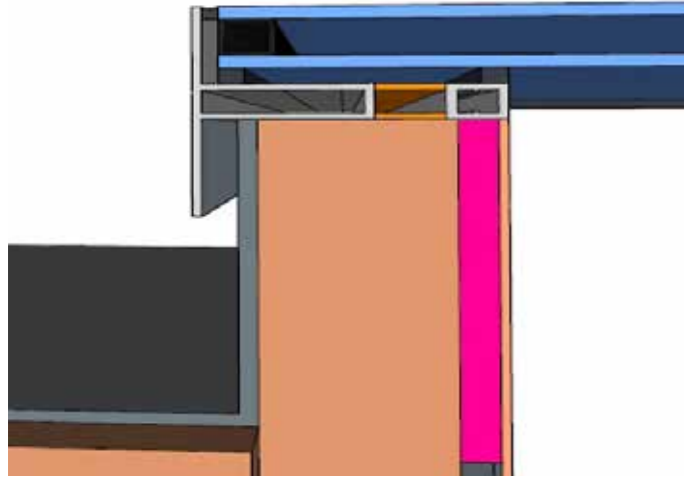
**Solar Self Cleaning Glass included as a standard**

*Privacy Glass available on request*

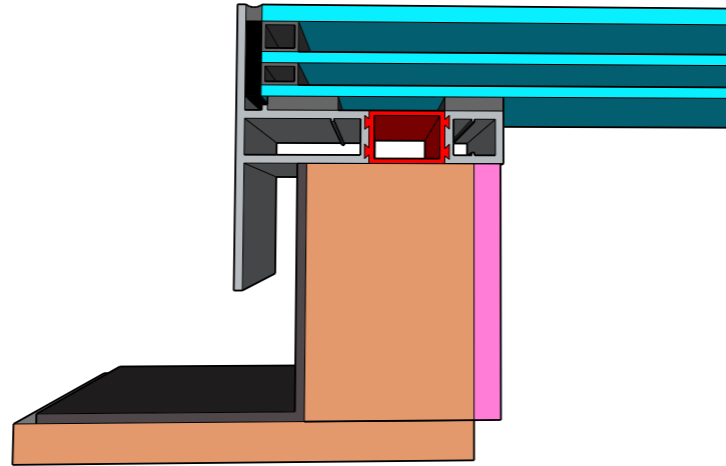


# Glazing Options

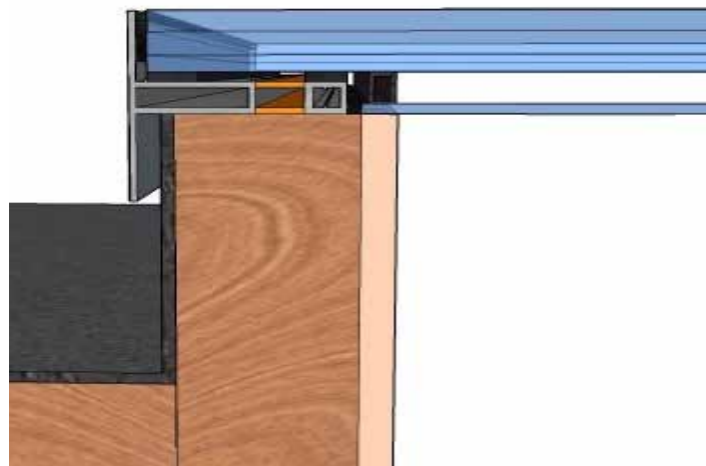
Double Glazed



Triple Glazed



External Walk On



Internal Walk On





## Walk-On Rooflights

Lead time 4 weeks

Our Walk-on glass rooflights boast thermal breaks of 27mm and a glass specification of 33mm component laminate minimum. This makes our Walk-on rooflights safer and more thermally efficient than most available on the market.

Walk-on glass can open up new design possibilities and feature to any property it's situated in. Available for both Internal use & External use.

- Thermally broken aluminium comprising of 2 x 27mm polyamide inserts
- Finished in a tough and long lasting polyester powdercoated paint
- Clear Glass or Privacy/Frosted Anti Slip Glass available
- 33mm Component Laminate Glass

Our Walk on Units are available to manufacture in a 1 pane option or Multi-pane option.

Maximum size in 1 pane:  
*(External manufacturing size)*

1000 x 2500mm  
1500 x 1500mm

Double glazed units will be used for all External Units.



Anthracite Grey  
RAL 7016m



Jet Black  
RAL 9005m



Anthracite Grey 7016m  
External  
White 9910m Internal



Jet Black 9005m  
External  
White 9910m Internal





# Opening Rooflights

Lead time 3 weeks



We are proud to announce that we now offer **colour coded gaskets** on our rooflight range.

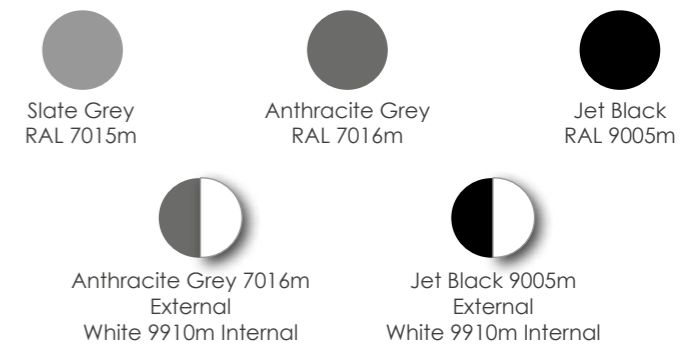
Being the first company to achieve this, along with the already industry leading thermal and water tight performance, our Opening Rooflight truly is in a league of its own.

First Glass Roofs Frameless Opening Rooflight is available in electric or manually operated versions, boasting market leading U-values along with industry leading water tightness using our own triple seal system.

A first of its kind which is fully frameless internally, allowing more sky and less frame, and externally keeping framework to a minimum to achieve the slimline appearance which aesthetically compliments the range of our fixed Rooflights.

This, together with our Flat Rooflight, boasts only the best in high end components for safe working and product longevity. Our Opening Rooflight comes with **Solar Reflective Self Cleaning Glass** as standard on all our Rooflights. With a glass U-value of just 1.0, this is unrivalled in its design and performance.

- 4 x 35mm Polyamide inserts
- Triple Seal Gasket System
- Finished in a tough and long lasting polyester powder coated paint
- Electric Opening or Manual Opening
- 32mm Double Glazed Unit
- Thermally Broken Aluminium



## Electric Opening (400mm opening)

- 230 volt motors
- Motor quantity size dependant
- Wireless remote as standard
- Additional sensors available on request
- Maximum size 1500 x 3200mm



## Manual Maintenance Hatch (90 degree opening)

- Gas strut assisted
- Stainless steel T handle
- Double lock security latches



## Manual Ventilation Hatch (300mm opening)

- Chrome winder including extension pole
- Tandem Winder for larger applications







Pitch  
**Perfect.**





## Frameless Roof Lantern Lead time 12-14 working days

We have designed our Frameless Roof Lantern with the thinnest sightlines on the market, a few number of companies have tried this specific product and to date there is only 1 other company offering an almost similar product to our Frameless Roof Lantern.

Due to its complexity and precision manufacturing techniques along with extended manufacturing times, 99% of companies choose conservatory-based products to achieve the same style but with massively unsightly hips and ridges. All joints are sealed with structural silicone to achieve excellent water and air tightness.

The Frameless Roof Lantern is manufactured with high specification glass, as a standard, to ensure a top quality product for your customers.

- Thermally broken aluminium comprising of 2 x 32mm polyamide inserts
- 23mm overhang for a better weather tight seal
- Structural glass to glass joints internally & externally



Consisting of glass to glass joins with thermal foam barrier using a glass of just 1.0 U value, the product will keep you warm even in the harshest of conditions. Along with Solar reflective glass, it keeps the suns UV rays down to a minimum.

Due to our Frameless design, our Roof Pyramids can be manufactured up to 2000mm x 2000mm.

Our Frameless Roof Lanterns can be manufactured up to 1500mm x 3000mm.






### Standard Sizes

1000 x 1000mm	1000 x 1500mm
1200 x 1200mm	1000 x 2000mm
1500 x 1500mm	1000 x 2500mm
1700 x 1700mm	1000 x 3000mm
2000 x 2000mm	1500 x 3000mm

All Roof Lanterns will be supplied factory bonded, ready to simply install onto the timber upstand.

### Solar Control Toughened Glass included as a standard

### Standard Colours

 Anthracite Grey RAL 7016m	 Jet Black RAL 9005m	 Anthracite Grey 7016m External White 9910m Internal
	 Jet Black 9005m External White 9910m Internal	 Bespoke Colour (Additional Charge)







## Frameless Glass Balustrade Lead time 2-3 weeks

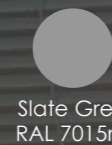
This is a revolutionary new design of fully integrated frameless glass balustrade system which is thermally broken and is fully integrated to fit bi-fold, sliding, french doors and tilt and turn window systems.

It has been designed by First Glass Roofs and has been tested to BS6180 and surpassed current regulations.

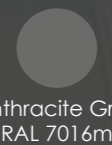
This will be a choice for architects and for people who have specific design requirements.

- Thermally broken aluminium frames
- Finished in a tough and long lasting polyester powder coated paint
- Fully tested to BS6180
- No top or bottom rails obstructing the view
- System fixed into the main structure of the building

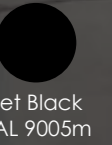
### 16.8mm Soteria Crystal Clear Glass



Slate Grey  
RAL 7015m



Anthracite Grey  
RAL 7016m



Jet Black  
RAL 9005m



White  
RAL 9910m



Bespoke Colour  
(Additional Charge)

*\*Balustrade dimensions must be calculated before doors are ordered*





## Frameless Glass Box

Lead time 4-5 weeks

Our Frameless glass box incorporates the latest in glass bonding and structural glass, incorporated into a seamless glass box structure, fully integrated into the building making a feature of any location its situated in.

Blending high quality components into a remarkable ultra slim edge design, this product also benefits from polyamide thermal breaks and maximising glass for better U values.

- Thermally Broken Aluminium
- Solar Control Toughened Glass
- Structural Glass to glass joins both internally and externally
- Supplied fully bonded
- Can be retro fitted into existitng openings
- Lead time 4-5 weeks

### Common Sizes

Height: 1400mm  
Width: 1400mm  
Depth: 300mm

Height: 1600mm  
Width: 1600mm  
Depth: 300mm

Height: 1800mm  
Width: 1800mm  
Depth: 300mm

Bespoke sizes also available



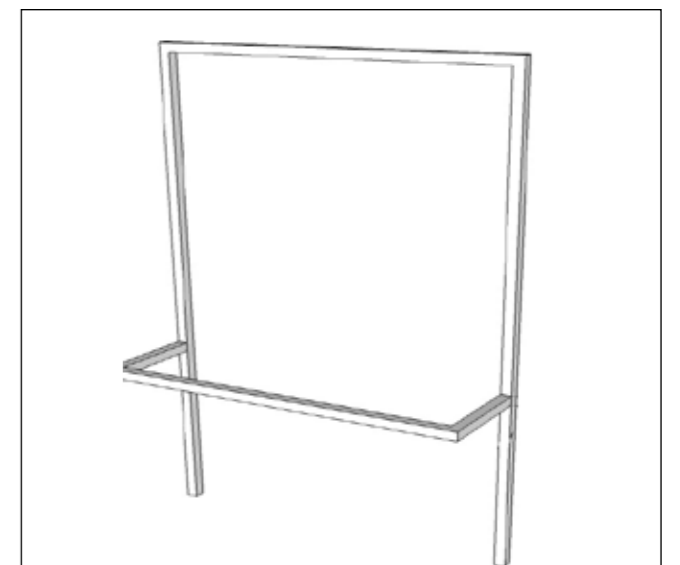
Anthracite Grey  
RAL 7016m



Jet Black  
RAL 9005m



Black Grey  
RAL 7021m



To ensure safety and strength, our Frameless Glass Box requires a steel frame securley bolted into the structure of the building. This is subject to your structural engineers design.





## Manufactured Frame Only

Here at First Glass Roofs we cater for all needs. If you already have a glass supplier and would prefer to purchase just our system, we offer a 'manufactured frame only' option.

We will manufacture the frame for you from as little as 5 working days (profile dependant).

Lead times on Manufactured Frame Only:

Flat Rooflight Profile	5-7 working days
Roof Lantern/ Pyramid Profile	5-7 working days
Opening Rooflight Profile <i>Both Electric &amp; Manual</i>	7-10 working days
Integrated Units	Subject to design

### Standard Colours:



Anthracite Grey  
RAL 7016m



Jet Black  
RAL 9005m

### Extra colours (additional charge):



Anthracite Grey 7016m  
External  
White 9910m Internal



Jet Black 9005m External  
White 9910m Internal



Bespoke Colour

All frames will be made to 'External Manufacturing Sizes' which is calculated as 'External Kerb Size + 30mm' to allow for tolerance each side of the upstand.

Wall abutment details can be tailored into the manufacturing of your frame.

Opening Rooflights must be situated at least 100mm away from any wall/obstruction.

Balustrade Profile <i>(Full height bar &amp; U Channel)</i>	3-5 working days
--	------------------

### Standard Colours:



Jet Black  
RAL 9005m



Anthracite Grey  
RAL 7016m



White  
RAL 9910m

### Extra colours (additional charge):



Bespoke Colour

## Integrated Units

Why not take the best of one product, and integrate it with the best of another?

Our bespoke manufacturing allows us to take our products to the extreme and create the perfect bespoke Rooflight for your customer.

Contact us for your bespoke requirements.

Integrated Units are available with our following extrusions:

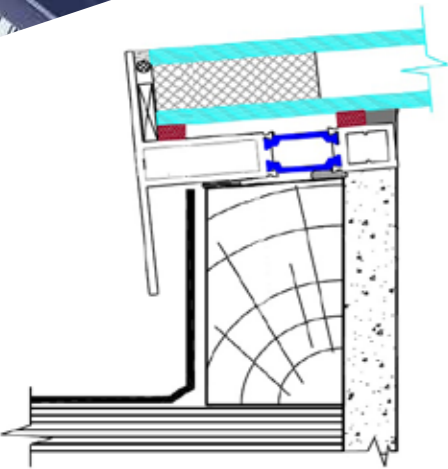
**Flat Rooflight & Electric Opening Profile**

**Flat Rooflight & Manual Opening Profile**

**Frameless Lantern & Electric Opening Profile**



## Upstand Requirements



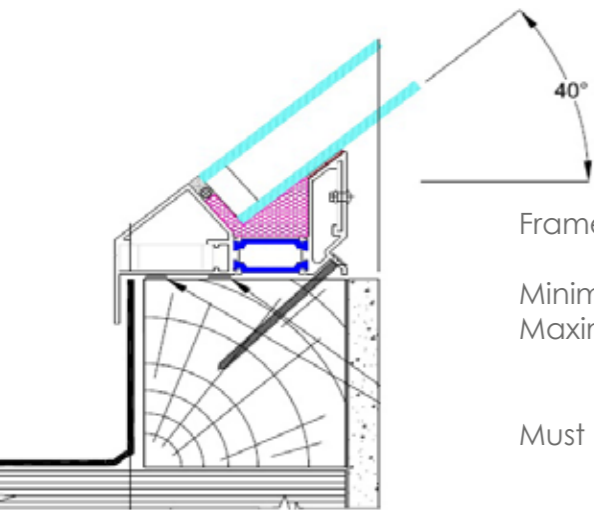
### Frameless Flat Rooflight

Minimum Upstand Width: 70mm  
Maximum Upstand Width: Up to 200mm

*\*Upstand widths larger than 80mm will require a bespoke 'Blackout Vinyl' around the glass edge*

Minimum pitch: 5 degrees  
Maximum pitch: 45 degrees

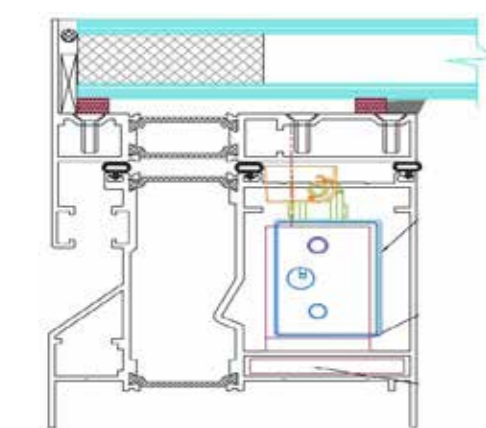
*\*Please note water will not pool off the Rooflight on installations under a 5 degree pitch*



### Frameless Roof Lanterns & Roof Pyramids

Minimum Upstand Width: 70mm  
Maximum Upstand Width: Up to 100mm

Must be installed on a Flat Roof 0 degrees.



### Opening Rooflights (Electric Opening 400mm & Manual Openings)

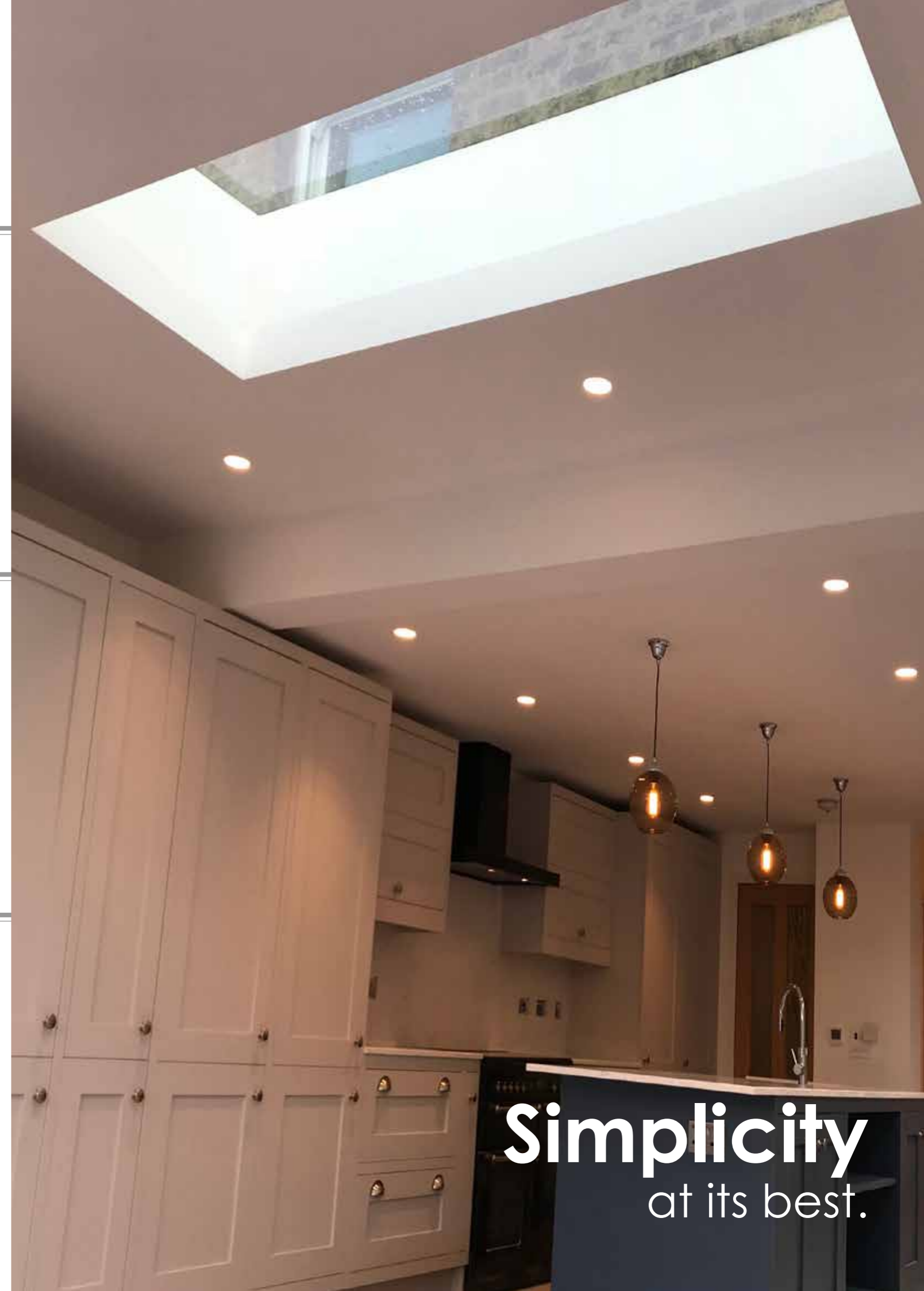
Minimum Upstand Width: 95mm  
Maximum Upstand Width: 105mm

*\*Upstand widths larger than 105mm will require the metal flange on the extrusion to be cut off*

Minimum pitch: 5 degrees  
Maximum pitch: 15 degrees

*\*Please note water will not pool off the Rooflight on installations under a 5 degree pitch*

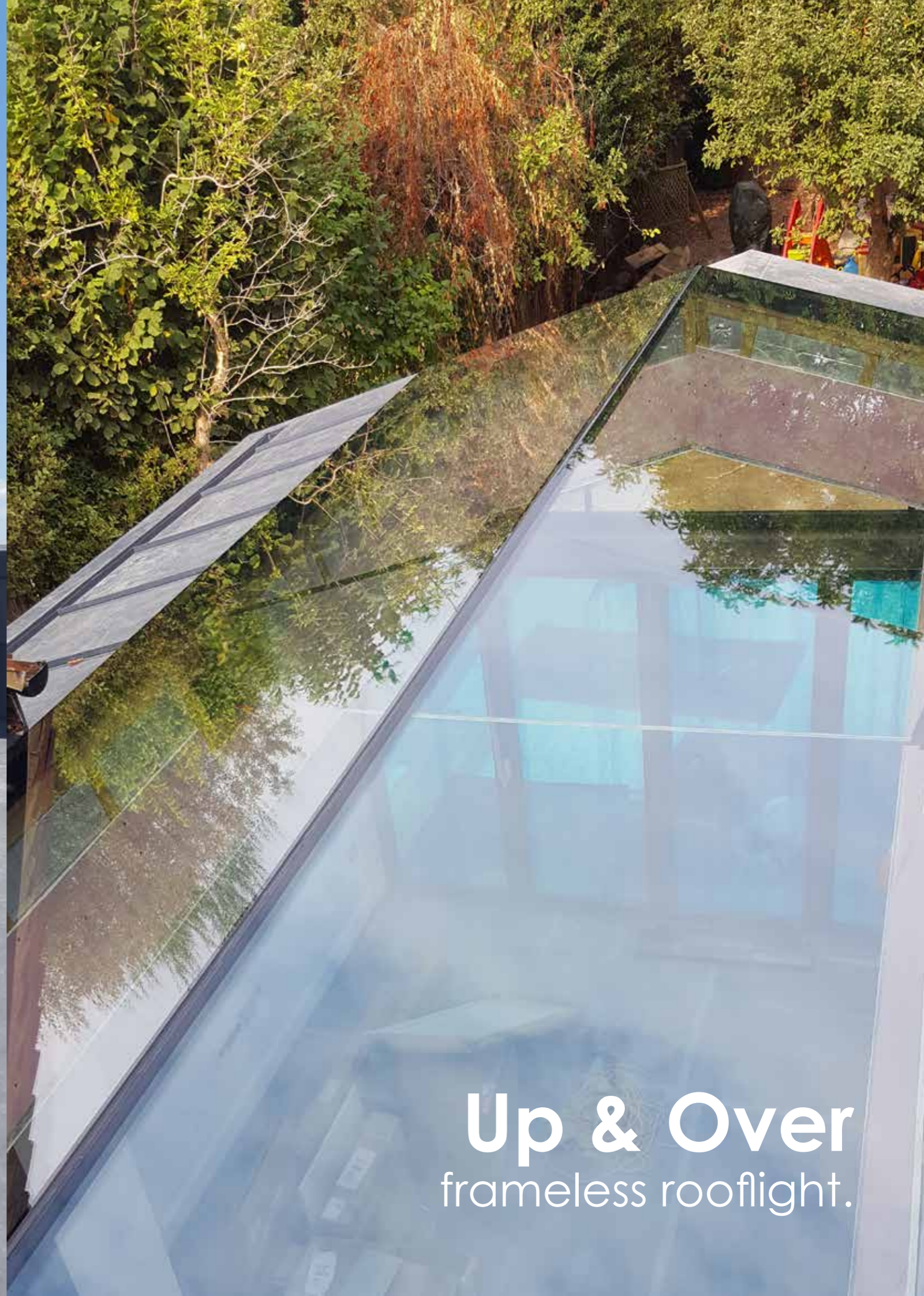
All Opening Rooflights must be situated at least 100mm away from walls.



**Simplicity**  
at its best.



**Bespoke**  
designs.



**Up & Over**  
frameless rooflight.





# frequently asked QUESTIONS

## What is 'External Manufacturing' Size?

This is your External Kerb Size plus 30mm. This gives leeway to ensure the Rooflight fits the timber upstand perfectly.

## "Thermally Broken" explained

Thermal breaks are polyamide strips to ensure that the aluminium is thermally efficient, this is done by rolling the two aluminium extrusions together with the polyamide- this will stop condensation and heat loss. A lot of systems out there are just made of a single piece of aluminium, these cannot be classed as 'systems' and have no test results as they are not thermally efficient in any way by design.

## What's the difference between fully tested and a 'calculation'?

Calculations can estimate the U-value but are not accurate and can be manipulated to your favour. Having this done through a government accredited testing facility gives real accurate U-values with no manipulation just true test results.

## Why is it important for Rooflights to be fully tested?

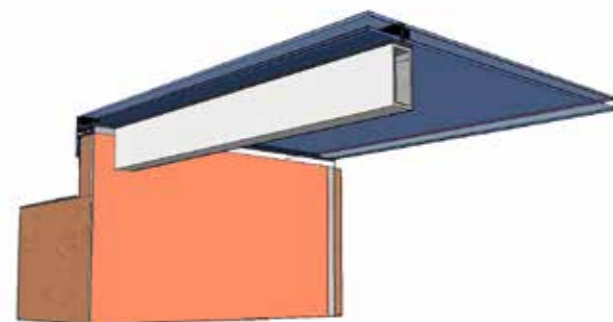
We ensure all our products are fully tested to meet with strict building regulations and specific design requirements.

## What's the difference between Silicone Sealed Units & Hot Melt Units?

Overtime UV rays break down hot melt sealed units, so we use only silicone sealed units as they do not degrade under UV rays. Silicone sealing lasts longer and out performs hot melt. You will find silicone sealed units are mostly used in structural glass applications such as skyscrapers etc.

## What if the Flat Rooflight is too large for one pane of glass?

The glass can be split into smaller sections with the design of a glass beam or a structural beam that the glass is bonded to. This allows you to make much larger rooflights with the ease of transportation and installation without the need for costly lifting equipment. For narrower Rooflights, we can use a structural glass to glass join for a more 'Frameless' look.



## What's the difference between glass to glass joins and the usual bars you find in standard Roof Lanterns?

Replacing bars with structural glass to glass joins means we can achieve better U-values, keep the Lantern more thermally efficient yet still maximise light with much thinner hips and ridge. Overall, accomplishing a more aesthetically pleasing and neater product by design.

## What's the maximum size glass unit thickness that can be used in our systems?

Flat Rooflight.....	up to a 45mm unit
Roof Lantern.....	30mm unit only
Opening Rooflight.....	up to a 36mm unit
Balustrade.....	16.8mm Soteria Crystal Clear

## Do I need planning permission for a Frameless Glass Box?

I would run the design through, just in case there would happen to be a problem this can be rectified by design.

## Do we install?

No, we are purely a systems company that design & manufacture for supply only. However, depending on your location we can pass you through to one of our distributors for your installation needs.

## We already have a glass supplier, can I purchase just the frame?

Yes- our Flat Rooflight, Roof Lantern & Opening Rooflight systems are available to purchase as a 'manufactured frame only'.

## Can I install your Rooflights onto any roofing substrate?

Yes, this is no problem. As long as the rooflight is being fitted onto a timber upstand, and the correct sealant is applied depending on the substrate.

## What's the minimum and maximum pitch for your Rooflights?

Flat Rooflight.....	5 - 45 degrees
Opening Rooflight.....	5 - 15 degrees
Roof Lantern.....	0 degrees only

## What if the Rooflight needs to be installed against a wall?

This is not a problem, we can manufacture the Rooflight to suit the wall abutment detail.



## Can our Frameless Roof Lantern vary in pitch?

Due to our aluminium extrusions, our Lantern is set at a pitch of 40 degrees as a standard, and cannot be changed.



## Why choose First Glass Roofs systems?

- Fully tested products by a government accredited facility
- Powdercoated by the founders of powder coating technology
- Design & Manufactured in the UK
- Superior sub system integration
- Easy product installation
- Industry leading U-values
- Best in bespoke options
- Energy efficient compliant with building regulations
- Achieve unsupported roof spans of 1500mm
- Glass concealed in the system to ensure safety
- Severe weather rated and snow loading rated
- Solar control glass included as a standard
- Low maintenance products
- No external fixings
- Fully tested glass to glass joins
- Ultra low thermal-conductivity





First Glass Roofs Ltd  
Unit 2E Blacknest Industrial Estate  
Blacknest  
Hampshire  
GU34 4PX

Tel: 01420 520 580  
Email: [firstglassroofs@outlook.com](mailto:firstglassroofs@outlook.com)  
Web: [www.firstglassroofs.com](http://www.firstglassroofs.com)